

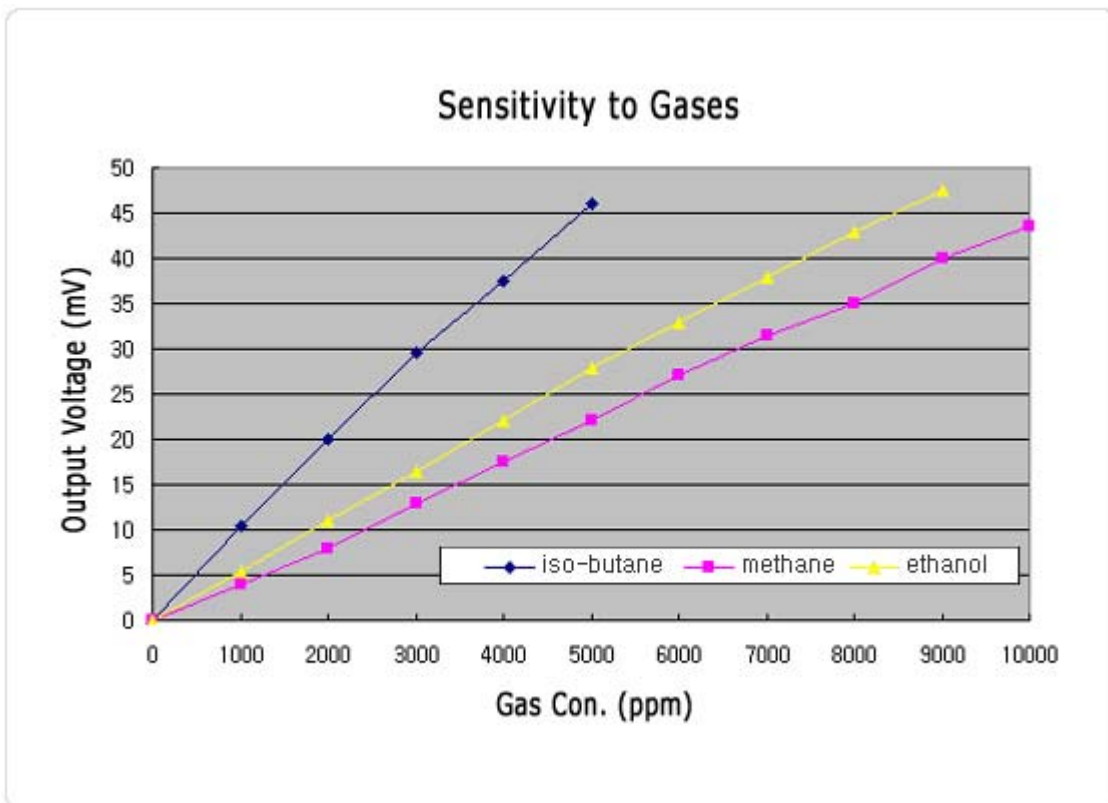
● KGS 501



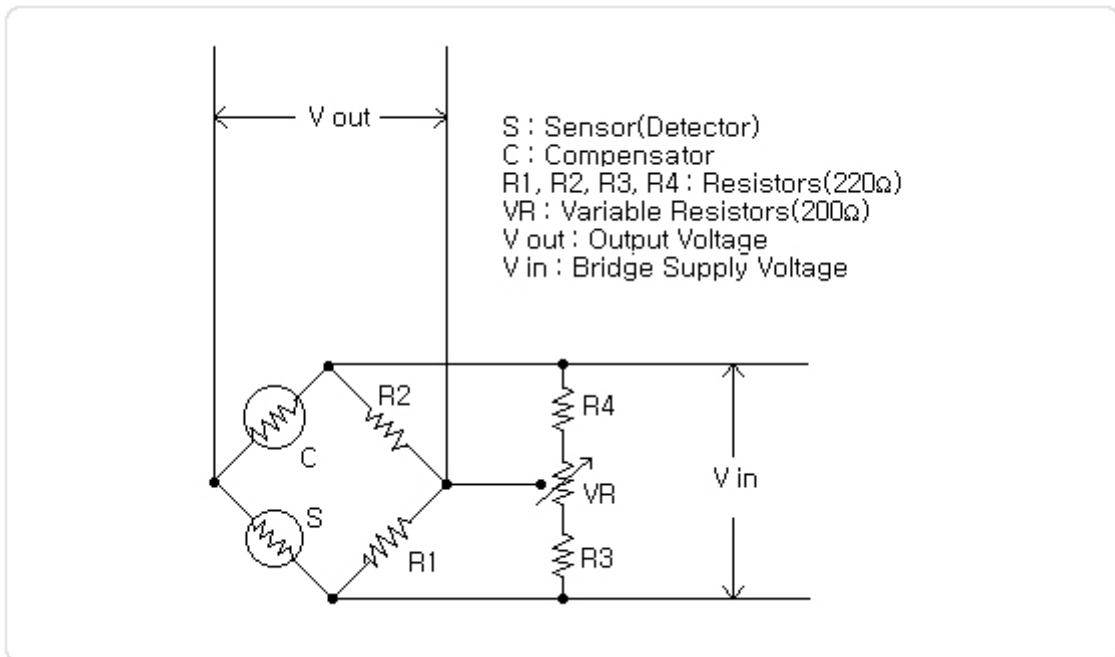
■ Specifications

Gases Detected	Most combustible gases
Range	0 ~ 100% LEL
Application	Fixed type
Operating Voltage	2.20 V
Current	> 340 mA
Output Sensitivity	15-20 mV / CH ₄ 4000ppm
	18-22 mV / C ₄ H ₁₀ 2000ppm
Response Time	< 10 seconds
Ambient Temp. Range	-20°C ~ 50°C
Storage Temp. Range	-30°C ~ 70°C

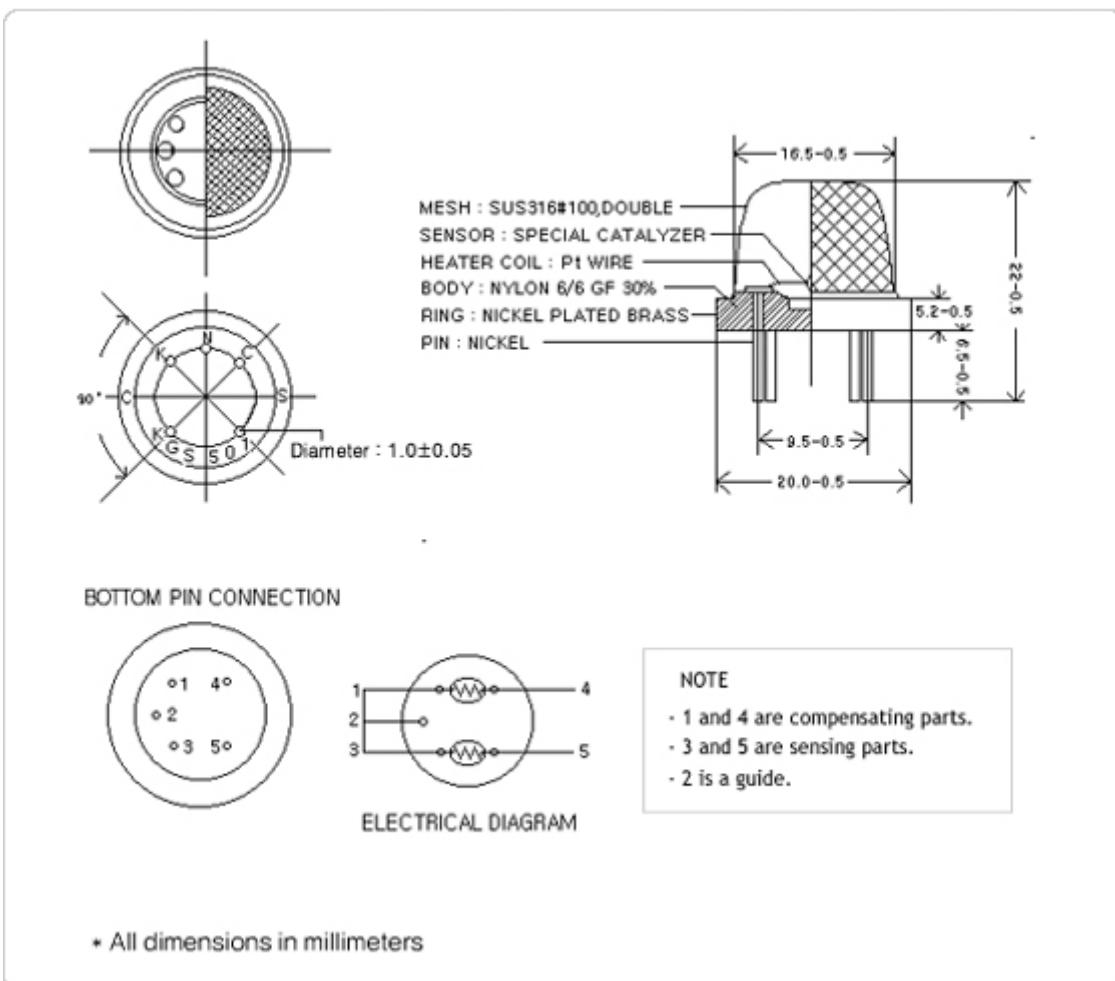
■ Sensitivity Data



■ Basic Measuring Circuit



■ Structure and Materials



■ Characteristics Data

